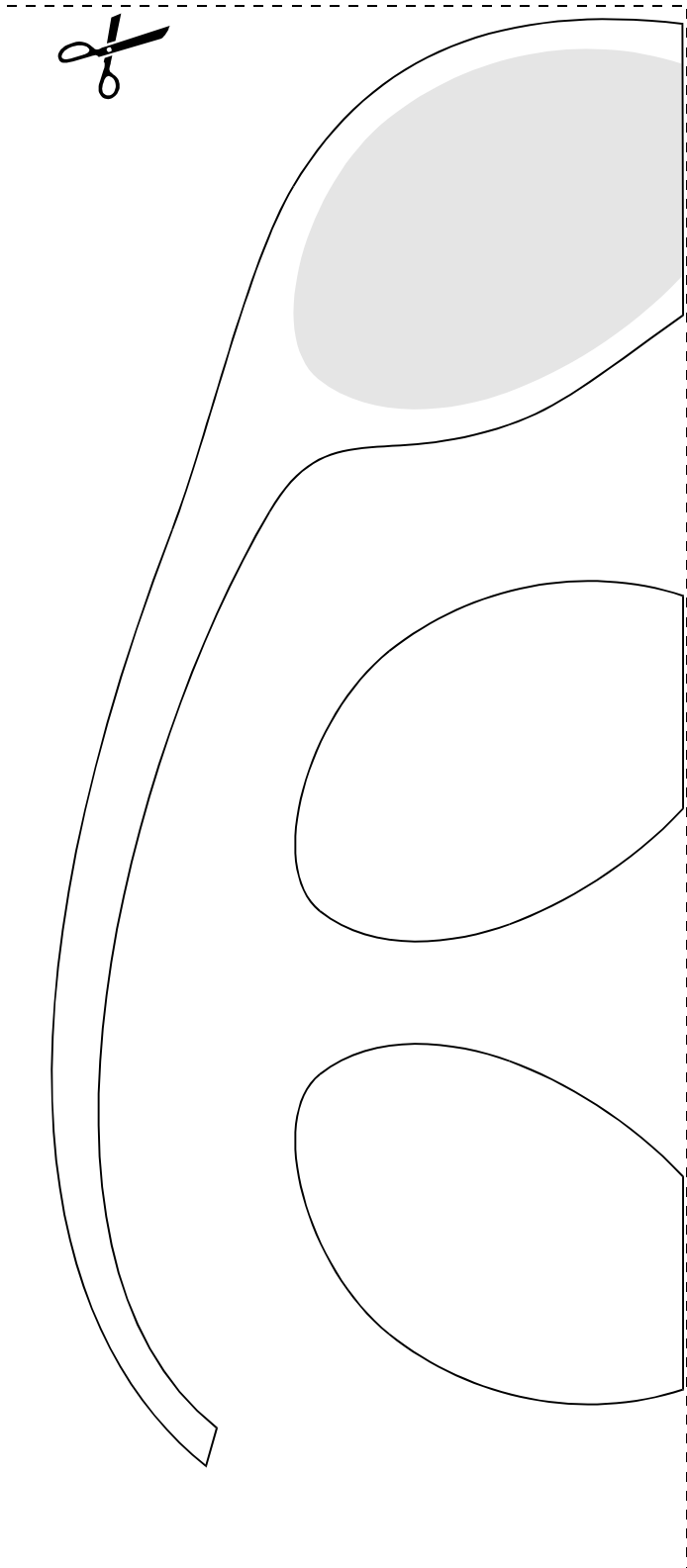


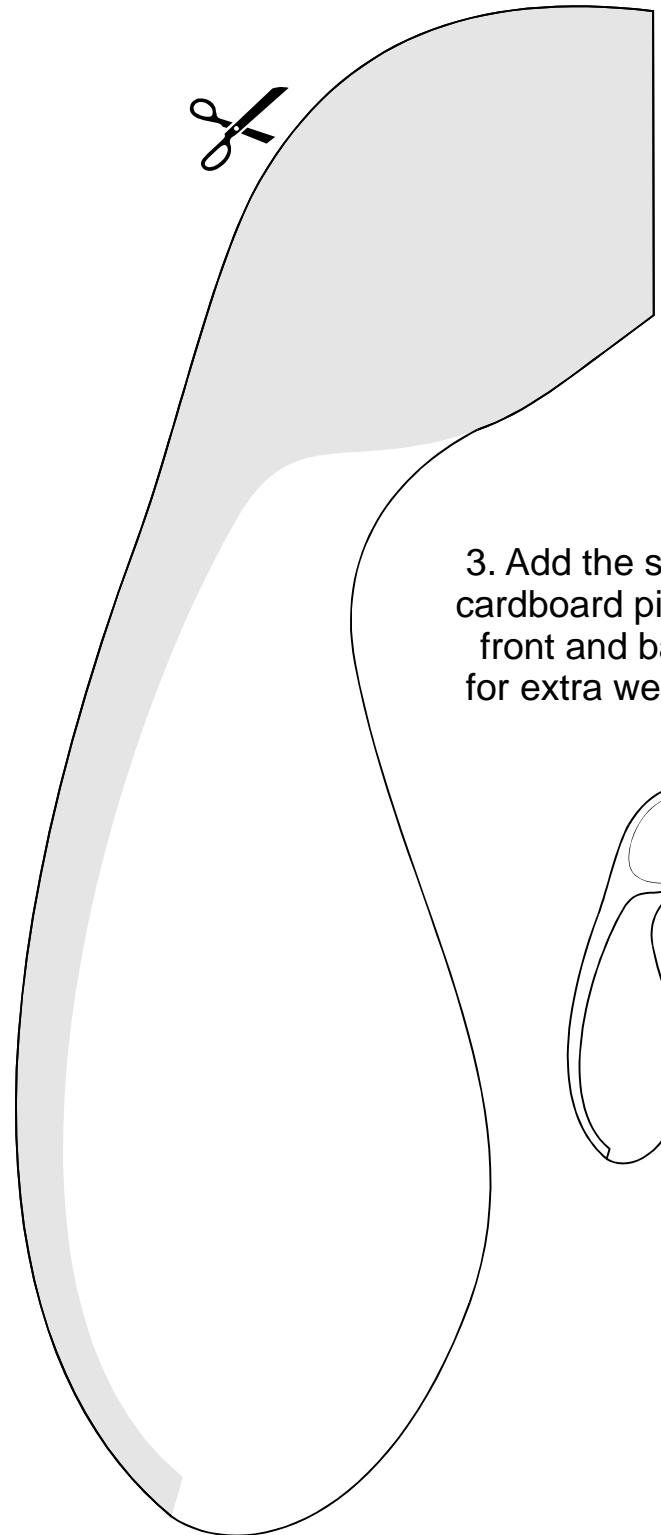
Maple Seed Helicopters

© 2005 Bird Flight web site
www.ornithopter.org/birdflight

1. Cut on the dotted line.
Glue the pattern onto cardboard,
and then cut out the three pieces.



2. Glue the long cardboard
piece onto the shaded area below.
Then cut along the solid outline.



3. Add the small
cardboard pieces
front and back
for extra weight.

